

XCD SHOP – LICENSE PLATE TOOL HOLDER (LPTH) SET

INSTRUCTION MANUAL

Last Revised: March 1, 2025

NOTICES:

- The LPTH is largely made of PETG thermoplastic polyester. PETG is known to maintain its shape and rigidity in high temperatures with decent resistance to UV damage. However, to ensure longevity of the LPTH, do not subject it to air temperatures above 130 deg. Fahrenheit.
- This product is 3D printed. As with any 3D-printed, custom-made product, there will be slight blemishes and imperfections. In order to keep production time and costs low, the stock version is delivered as-printed. You may lightly sand and/or apply primer and paint as desired. However, any alterations made to the product will make it ineligible for return.
- Although not watertight, both the left-side and right-side LPTHs feature an interior drainage sump and open port in the back to prevent water retention should water ingress inside the storage space. We recommend putting your tools inside a small sandwich ziplock bag before placing them inside the LPTHs to protect them from water and dust.

Getting to Know Your LPTH Set:

The License Plate Tool Holders (LPTH) can hold rarely-used small tools (not included) for emergency access to the Rivian R1 front trunk (frunk) in case of complete loss of electrical power. The LPTH set consists of a left-side LPTH and a right-side LPTH that is mounted behind the vehicle's rear license plate using existing mounting points and fasteners; no new holes or permanent modifications to your vehicle are needed to install the LPTHs.

It has been tested and shown to be compatible with the Rivian R1T. It likely is also compatible with many other North American vehicles using the same 12 x 6 inch standard license plate form factor

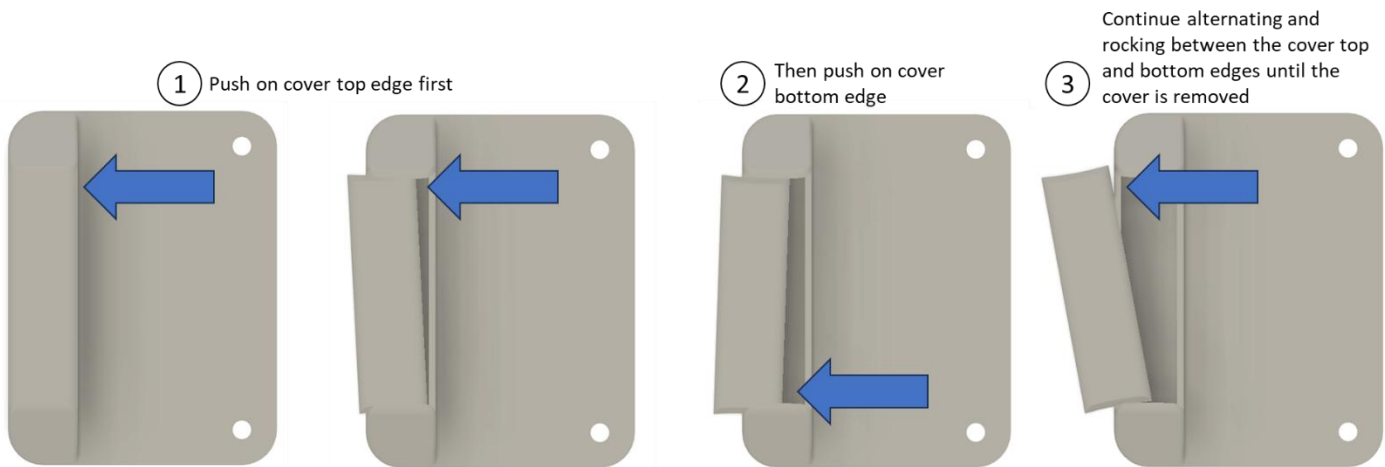


Specifications:

- 3D printed using heat- and UV-resistant PETG filament.
- Minimum internal storage dimensions (H x W x D) per LPTH: 3.81 x 0.94 x 0.65 inches (97 x 24 x 17 mm).
- Maximum exterior protruded dimensions (H x W x D) not including back mounting plate covered by the license plate: 5.94 x 1.26 x 0.87 inches (151 x 32 x 22 mm).

Removing the Covers and Placing the Tools Inside the LPTHs:

- 1) Remove the cover from the LPTHs. The covers are deliberately designed to be difficult to remove, but they should still be removable by hand without the use of any tools. The easiest to do so is to alternate pushing against the top and bottom of the cover to rock it out of its slot.



- 2) Place the desired tools within the LPTH volume.
- 3) Slide the cover back onto the LPTHs, this time reversing the motion of alternating pushing against the top and bottom of the cover until it slides completely back into place.

Installing the LPTH Set onto the Vehicle:

- 1) Remove your existing license plate and any license plate frames.
- 2) Place the Left LPTH behind the license plate, and place the license plate frame (if any) on top of the license plate and the Left LPTH. Install the fasteners for the left side of the license plate, but do not fully tighten the fasteners.
- 3) Place the Right LPTH behind the license plate and license plate frame (if any). Install fasteners for the right side of the license plate and tighten.
- 4) Tighten the left side fasteners.

NOTE: Be sure to mount the Left LPTH to the left of your license plate and the Right LPTH to the right of your license plate. Both LPTHs have drainage sumps and drainage holes that must be oriented downwards.

NOTE: The LPTH set can only accommodate license plate holders up to 12.3 inches wide.

Customer Support:

If you have any problems with the RCS Safe and need support, please contact us by e-mail at support@XCDSshop.com, or check out our website at XCDSshop.com.